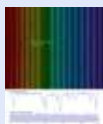


Researchers are first to simulate the binding of molecules to a protein (7/2/2008)



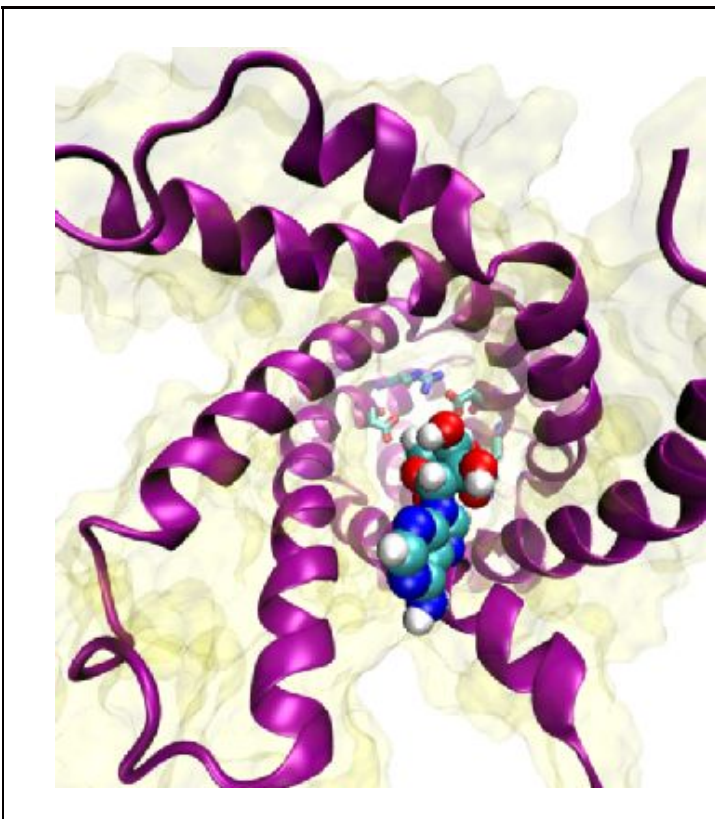
[More Articles](#)



[Rediscovering Venus to find faraway earths](#)



[Archaeologists discover bronze remains of Iron Age chariot](#)



View of the ATP/ADP carrier from the cytoplasm, with the ADP molecule (blue, aqua, red and white spheres) at the entrance, ready to be funneled into the carrier. - Image by Yi Wang and Emad Tajkhorshid (2008)

You may not know what it is, but you burn more than your body weight of it every day. Adenosine triphosphate (ATP), a tiny molecule that packs a powerful punch, is the primary energy source for most of your cellular functions.

Now researchers at the University of Illinois have identified a key step in the cellular recycling of ATP that allows your body to produce enough of it to survive. Without this cycling of ATP and its low-energy counterpart, adenosine diphosphate (ADP),

[Search](#)

[New Articles](#)

[Chemists uncover new role of a key base in organic synthesis](#)

[Unstoppable](#)



[magneto-resistance](#)

[Intelligent materials that work in space](#)



[Analyzing gold and steel -- rapidly and precisely](#)





Researchers resolve the Karakoram glacier anomaly, a cold case of climate science

Fish tale: New study evaluates antibiotic content in farm-raised fish



New 3-D display



technology promises greater energy efficiency



Researchers break nano barrier to engineer the first protein microfiber



Structure of an iron-transport protein revealed

First

into and out of the mitochondrion, where ADP is converted into ATP, life as we know it would end.

Researchers have for the first time simulated the binding of ADP to a carrier protein lodged in the inner membrane of the mitochondrion. It is the first simulation of the binding of a molecule to a protein. Their findings appear this week in Proceedings of the National Academy of Sciences.

As its name indicates, ATP contains three phosphate groups. The energy produced when one of these groups is detached from the molecule drives many chemical reactions in the cell. This process also yields ADP, which must go through the ADP/ATP carrier (AAC) to get into the mitochondrion to be converted back into ATP.

The AAC acts a lot like a revolving door: For each molecule of ADP going into the mitochondrion, one ATP gets booted out. These two activities are not simultaneous, however. The carrier is either shuttling ADP into the mitochondrion or ejecting ATP into the wider environment of the cell, where it can be put to use.

"The carrier is a reversible machine," said biochemistry professor Emad Tajkhorshid, who led the study which was conducted by graduate student Yi Wang. "Both ATP and ADP can bind to it and make it to the other side using this transporter."

Previous studies used X-ray crystallography to determine the three-dimensional structure of the carrier when it was ready to accept a molecule of ADP.

In the new analysis, the researchers developed a computer simulation of the interaction of a single molecule of ADP with the carrier protein. Thanks to better simulation software and larger and more sophisticated computer arrays than were available for previous studies, this simulation tracked the process by which ADP is drawn into the carrier. It also showed how ADP orients itself as it travels to the site where it binds to the carrier. (See movie.)

In the simulation, the researchers observed for the first time that ADP disrupts several ionic bonds, called salt bridges, when it binds to the carrier protein. Breaking the salt bridges allows the protein to open - in effect unlocking the door that otherwise blocks ADP's route into the mitochondrion.

The simulation included every atom of the carrier protein and ADP, as well as all of the membrane lipids and water molecules that make up their immediate environment - more than 100,000 atoms in all. It tracked the interaction over a period of 0.1 microseconds, an order of magnitude longer than what had been possible before.

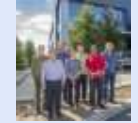
"Until two years ago 10 nanoseconds was really pushing it," Tajkhorshid said. "Now we are reaching the sub-microsecond regime, and that's why we are seeing more biologically relevant events in our simulations."

The longer time frame meant that the researchers did not need to manipulate the interaction between the molecules. They simply positioned the ADP at the mouth of the carrier protein, some 25 angstroms from the site where they knew it was meant to bind. (An angstrom is one ten-millionth of a meter. Most molecular binding interactions occur at less than 6 or 7 angstroms.) They even placed the ADP upside-down at the mouth of the protein carrier and saw it flip into an

Of bio-hairpins and polymer-spaghetti



Study reveals molecular structure of water at gold electrodes



A cost-effective and energy-efficient approach to carbon capture

New advances in additive manufacturing using laser solid forming to produce metallic parts



Improvements in fuel cell design



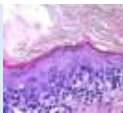
Goldilocks principle wrong for particle assembly: Too hot and too cold is just right



New technique



step:
From
human
cells to
tissue-
engineered
esophagus



the mouth of the protein carrier and saw it flip into an orientation that allowed it to bind to the carrier.

The identified binding pocket for ADP explained a lot of known experimental data, and revealed an unusual feature of the carrier protein: Its binding site and the entryway leading to it had an extremely positive electrical charge.

It had a much greater positive charge than any known protein transporter.

This positive charge appears to serve two functions, Tajkhorshid said. First, it allows the protein carrier itself to nestle tightly in the mitochondrial membrane, which contains a lot of negatively charged lipids. Second, it strongly attracts ADP, which carries a negative charge. More interestingly, through a bioinformatics analysis the researchers show that this unusual electrostatic feature is common to all mitochondrial carriers.

Other negatively charged ions can enter the carrier, Tajkhorshid said, but only a molecule with at least two phosphate groups can disrupt the salt bridges to activate it.

This simulation marks the first time that researchers have been able to describe in molecular detail how a protein binds to the molecule that activates it, Tajkhorshid said.

The findings shed light on a fundamental physiological process, he said.

"Any time you move anything in your body, you use ATP," he said. "Many enzymatic reactions also require ATP. In the central nervous system, the transport of hormones, neurotransmitters or other molecules, these are all ATP-dependent."

"It has been estimated that you burn more than your body weight in ATP every day," he said. "So that's how much ATP you have to carry across the inner mitochondrial membrane every day - through this guy."

Tajkhorshid is also a professor of pharmacology in the College of Medicine and an affiliate of the Beckman Institute and the Center for Biophysics and Computational Biology in the College of Liberal Arts and Sciences.

Note: This story has been adapted from a news release issued by the University of Illinois

Post Comments:

to make foams
could lead to
lightweight,
sustainable
materials



Wild molecular interactions in
a new hydrogen mixture

Atmospheric chemistry
hinges on better physics
model

Facetless crystals that mimic
starfish shells could advance
3-D-printing pills

Through the combining glass

Magnetic mirrors
enable new
technologies by
reflecting light in
uncanny ways



Lift



weights, improve
your memory

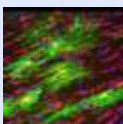
Spiders: Survival of
the fittest group



Autophagy helps fast
track stem cell
activation



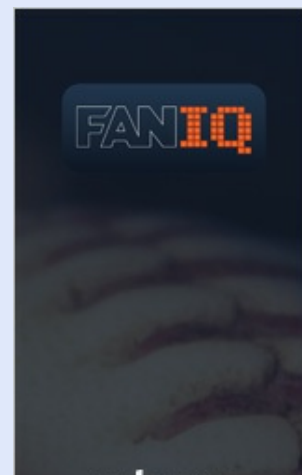
Myelin
vital for



Archives

Science
Friends

FAN IQ



learning new
practical skills

More
physical
activity
improved
school



performance



Engineering new
vehicle powertrains

Around
the
world
in



400,000 years: The
journey of the red fox

Active
aging
is
much
more
than
exercise



Study:
New
device
can
slow,
reverse heart failure



Are the

where
fans
belong

Visit Now

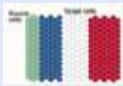
world's
religions
ready for
ET?



Gut



bacteria, artificial
sweeteners and
glucose intolerance



Recreating the stripe
patterns found in
animals by
engineering
synthetic gene
networks

Laying
the



groundwork for data-
driven science

Hold on,
tiger mom



Nature's designs
inspire research into
new light-based
technologies



Missing piece found
to help solve
concussion puzzle



Biologists delay the
aging process by
'remote control'



Geography matters:
Model predicts how
local 'shocks'
influence U.S.
economy



Identified for the first
time what kind of
explosive has been
used after the
detonation

Copied
from
nature:



Detecting software errors via genetic algorithms
